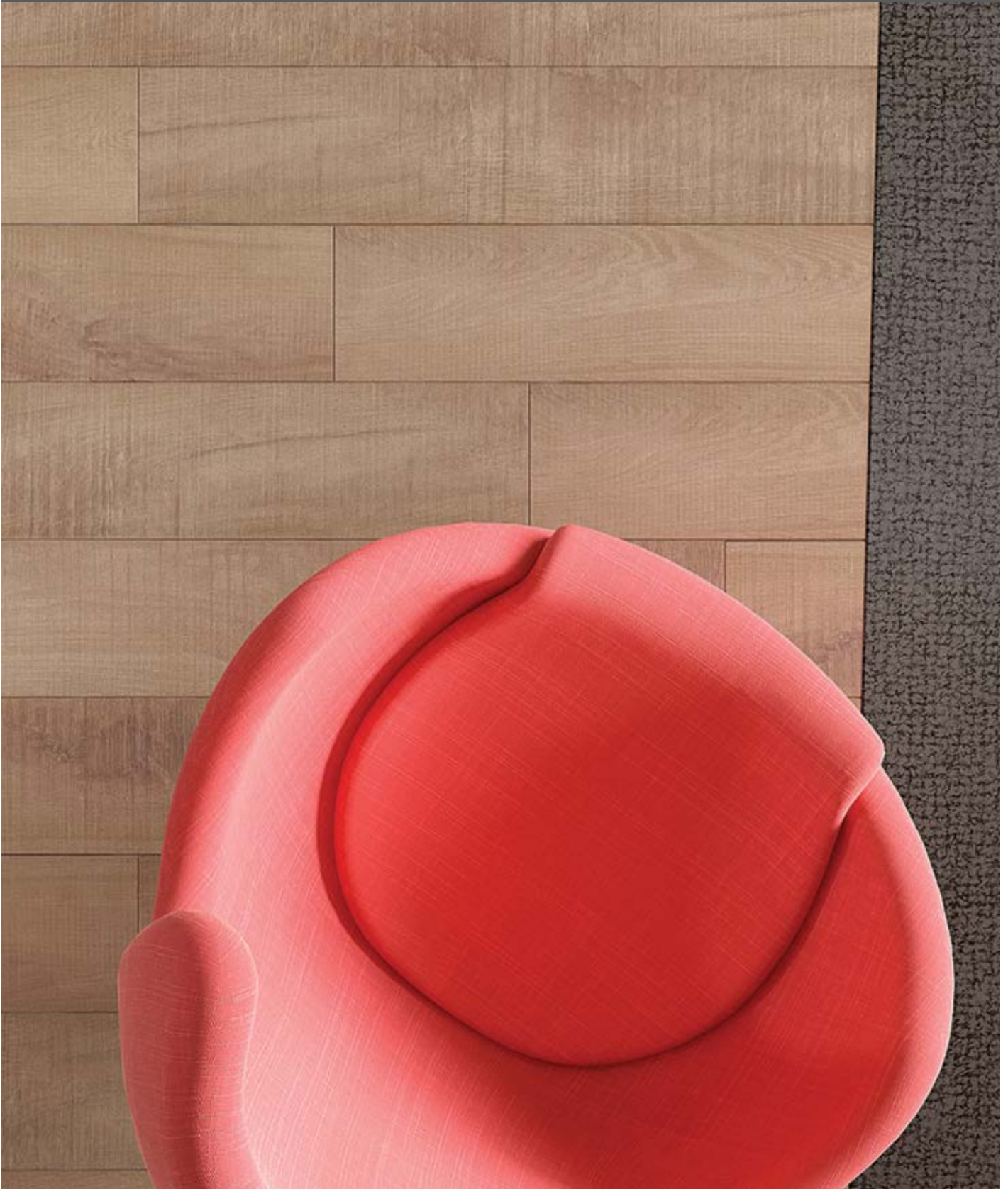


## PRODUCT GUIDE - 2016





12mm QLD SPOTTED GUM - GLOSS



## CONTENTS



02 // PRODUCT MATRIX

04 // HERMITAGE PRESTIGE OAKS - FRENCH OAKS

10 // LOOM - WOVEN DESIGN FLOORING

16 // GRAND PROVINCIAL OAK - LAMINATE

22 // EVOLUTION AUSTRALIAN SELECT - LAMINATE

28 // GENESIS LUXE - BAMBOO

34 // GENESIS - BAMBOO

40 // NANOTAC - VINYL












48 // FUSIONLVT - VINYL

52 // MATCHING ACCESSORIES

56 // PROLAY UNDERLAY

57 // DISPLAY STANDS

# PRODUCT MATRIX

	Product	Product description	Technical Soecifications	Colours	Planks Per Box
LAMINATE		8mm Grand Provincial Oak	1216 x 196mm x 8	14 Colours	8
		12mm Grand Provincial Oak	2200 x 196mm x 12	14 Colours	5
		Evolution 12mm Gloss 1-Strip	1215 x 137mm x 12	7 Colours	8
		Evolution 8mm Matt 1-Strip	1214 x 142mm x 8	5 Colours	8
		Evolution 8mm Matt 2-Strip	1214 x 192mm x 8	4 Colours	8
		Provincial Lane by Darren Palmer	2200 x 196mm x 12	7 Colours	5
BAMBOO		Genesis Bamboo	1830 x 135mm x 14	15 Colours	6
		Genesis LUXE Bamboo	2200 x 216mm x 14	8 Colours	3
OAK		Hermitage Oaks European Oaks	2200 x 240mm x 14/4	12 Colours	6
VINYL		nanoTAC 4mm Vinyl	1219.2 x 184.2mm x 4	12 Colours	10
		FusionLVT 3mm Vinyl	1219 x 152mm x 3	5 Colours	18
		LOOM	500 x 500mm 1000 x 500mm	47 Colours & Designs to Choose from	16pcs

Surface	Area M <sup>2</sup> Per Pack	Edge Treatment	Joining System	Certifications / Ratings	Warranty
Wood grain embossed	1.91 m <sup>2</sup>	Waxed	Välinge 2G + Droplock	HDF 930kg per m <sup>3</sup>	25 years
Wood grain embossed	2.16 m <sup>2</sup>	Waxed	Välinge 2G + Droplock	HDF 930kg per m <sup>3</sup>	25 years
Flat (Not Embossed) Gloss	1.33 m <sup>2</sup>	Square Flat Finish Melamine	Click System	HDF 930kg per m <sup>3</sup> AC3 Heavy residential / Light Commercial	25 years
Embossed Matt	1.38 m <sup>2</sup>	Square Flat Finish Melamine	Click System	HDF 930kg per m <sup>3</sup> AC3 Heavy residential / Light Commercial	25 years
Embossed Satin	1.865 m <sup>2</sup>	Square Flat Finish Melamine	Click System	HDF 930kg per m <sup>3</sup> AC3 Heavy residential / Light Commercial	25 years
Embossed Matt	2.16 m <sup>2</sup>	V Groove Bevelled Edge	Välinge Click System	HDF 930kg per m <sup>3</sup> AC3 Heavy residential / Light Commercial	25 years
Embossed Matt	1.48 m <sup>2</sup>	Square Flat Finish Melamine	Click System	HDF 930kg per m <sup>3</sup> AC3 Heavy residential / Light Commercial	25 years
Embossed Matt-Lacquered	1.426 m <sup>2</sup>	4 Side Micro Bevel	Unifit System	HDF 930kg per m <sup>3</sup> AC3 Heavy residential / Light Commercial	25 years
Finish Brushed and Lacquered Veneer	3.168 m <sup>2</sup>	4 sided Bevel	Välinge 5G/2G	8 layers Klumpp UV cured lacquer	25 years
Embossed Matt Woodgrain	2.25 m <sup>2</sup>	Micro Bevel	Patent Glueless System	0.55 mm wear layer	25 years
Embossed Matt	3.34 m <sup>2</sup>	Square edge	3mm Glue down	0.55 mm wear layer	25 years
Soft Surface Absorbing Sound	4.0 m <sup>2</sup>	Extra Ceramic PU Coating Treatment	ECOLAY® installation without Glue	Approved for heavy Commercial use	25 years

GENUINE FRENCH OAK

ENGINEERED TIMBER

14  
mm



— THE —  
~ HERMITAGE ~  
*Prestige Oaks*

*European Oak Collection*



14  
mm

28 WALLACE  
28 SYLVAN  
28 FREYSVILLE  
28 LIBHART  
28 EMIG  
28 PICKING  
28 KEW GREEN

Simply  
Stunning Oaks

NATURAL WASHED OAK

# GENUINE FRENCH OAK

ENGINEERED TIMBER

14  
mm

FRENCH OAK

**Selected from the finest European Oaks, this exquisite collection of pre-finished oak flooring will inspire you to create interiors that exude warmth and character.**

The Hermitage Prestige Oak collection features a palette of 12 classic colours from the dark rich hues of Outback Brown Oak to the warm and natural splendour that is Smoked Oak. All surfaces are premium grade French oak, brushed and lacquered with world renowned Klumpp lacquer in a stunning ultra-matt finish. These striking planks are an extra wide 240mm by 2200mm long, helping you create smooth, flowing interiors.

Available in a 14mm thickness with a 4mm oak top layer and combined with an engineered core board that resists warping and cupping, the Hermitage Prestige Oak flooring is designed for Australia's harsh climate.

Installation is a breeze with the Valinge 5G click system. No longer do you need to use toxic

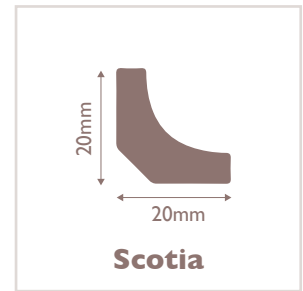
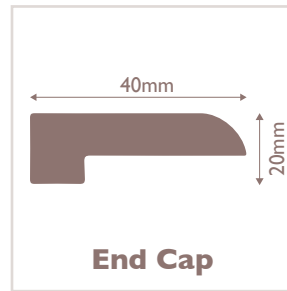
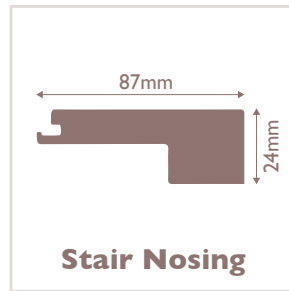
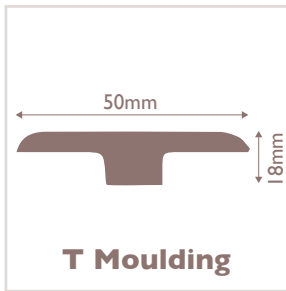
glues to install your beautiful new floor. Simply roll out our approved underlay and install your new floor directly over the top. No nails, no adhesives and best of all, planks can be replaced easily.

All Hermitage Prestige Oak floors are certified 'green' from our manufacturer, giving you peace of mind knowing that they are produced using sustainable forestry practices and are manufactured with the world's best environmental procedures.

Backed by a lifetime structural warranty and our industry-leading 25 year domestic wear warranty, there's guaranteed satisfaction for everybody with Hermitage Prestige Oaks.

## Matching Accessories

The Hermitage Prestige Oaks flooring has a number of accessories to provide the right finishing touch to all areas of your flooring.



## Flooring Technical Specifications

SPECIES	French Oak
SURFACE	Finish Brushed and Lacquered VENEER
THICKNESS	14mm / 4mm veneer
DIMENSIONS	2200mm length x 240mm width
WEIGHT	26kg per box
BOX SIZE	3.168m <sup>2</sup> per box
LOCKING SYSTEM	Välinge 5G/2G
CONSTRUCTION	3 layer
COATING	8 layers Klumpp UV cured lacquer
STRUCTURAL WARRANTY	Lifetime
WEAR WARRANTY	25 years



Scan to watch video and for more product information.



# GENUINE FRENCH OAK

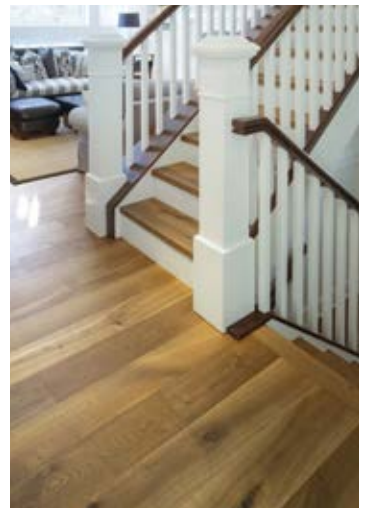
ENGINEERED TIMBER

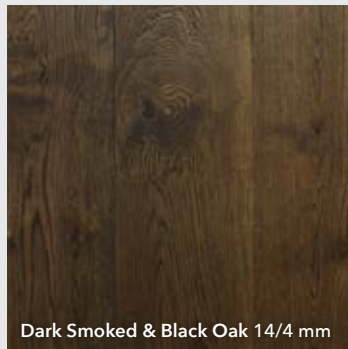
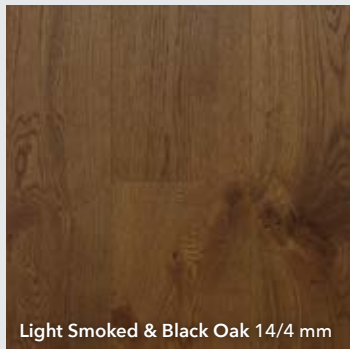
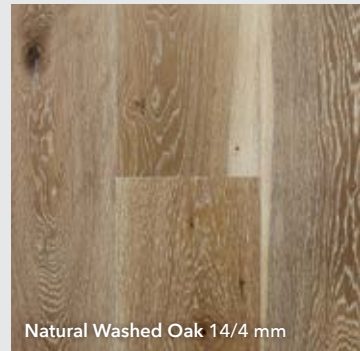
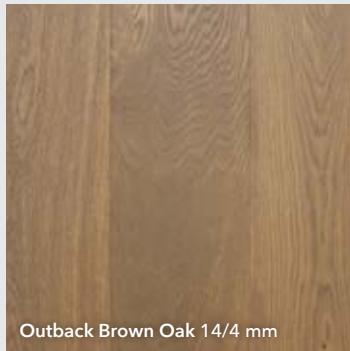
14  
mm

SMOKED OAK

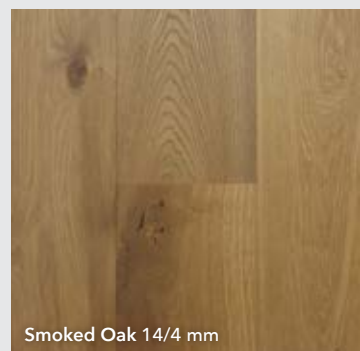
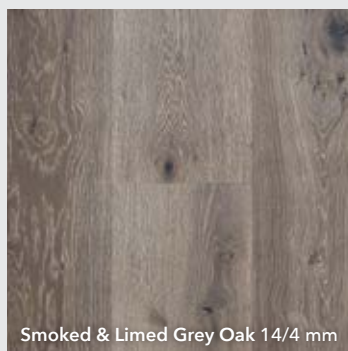
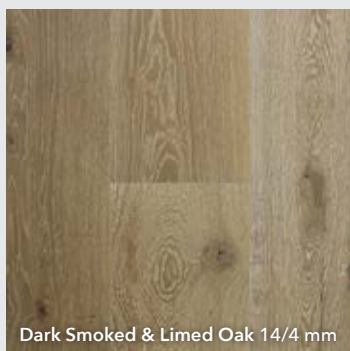
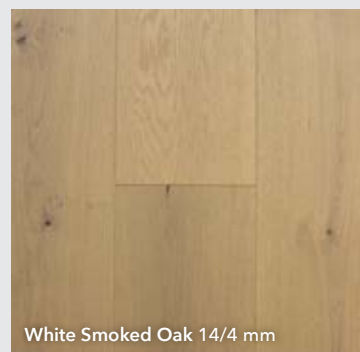
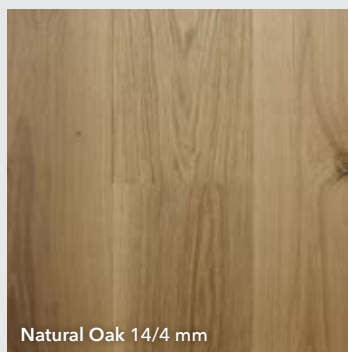


NATURAL OAK





  
 THE  
 HERMITAGE  
*Prestige Oaks*



VINYL

# #LOOM<sup>+</sup>

WOVEN DESIGN FLOORING



red<sup>dot</sup> award 2014  
winner



GOOD DESIGN  
AWARD 2014

## Reinventing Spaces



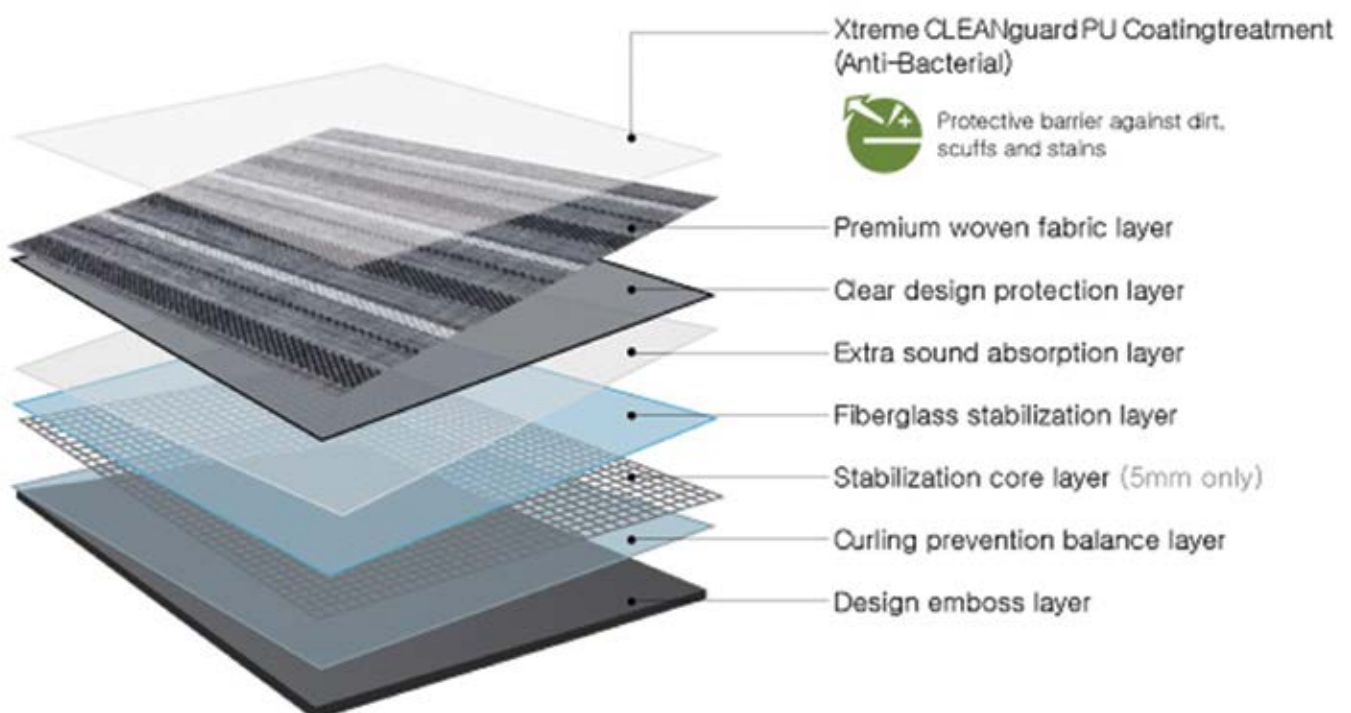
VINYL



## 5mm Thick with Fibreglass Stabilizing Layer

### Distinguished NOX Ecotecture® Multi-layer Property

NOX Ecotecture® Multi-layer Property featured with innovative functionality and safety, proven in more than 50 countries over 20 years.



## **Reinventing Spaces:**

Reliable flooring choice of high durability thanks to premium woven texture, diverse colors, variation two-module types (50x50, 50x100cm), and luxury vinyl tile backing used for 20 years in more than 50 countries. Reusable PVC backing certified by 'Floor Score' & loose-lay system with non-glue installation minimizes environmental impact. The use of PVC fabric certified by 'Oeko-Tex' and 'Greenguard' prevents atopic dermatitis. Its 'Clean Cut' finishing leaves no lint balls formed around the edge.

## **Creative Block:**

Infinite design possibilities with module system

Various patterns in two sizes found from expertise of designers in Tokyo/Berlin/Paris/Seoul. 'Accents' and 'Knit' are unlike other PVC fabric lines for mix & match, made of threads in different thicknesses, textures & natural patterns for unique style.

## **Excellence in Dimensional Stability:**

Five-layered backing with glass fibre has high stability keeping original size in temperature changes.



VINYL

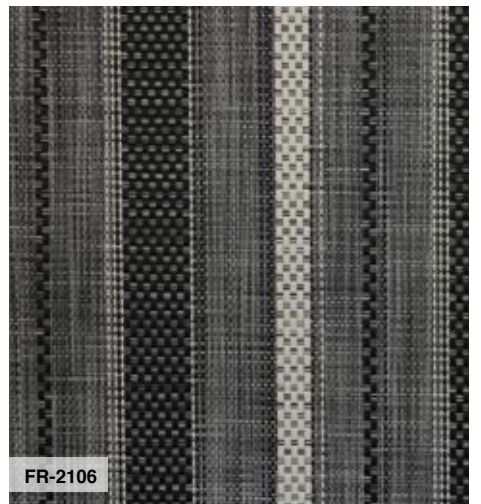
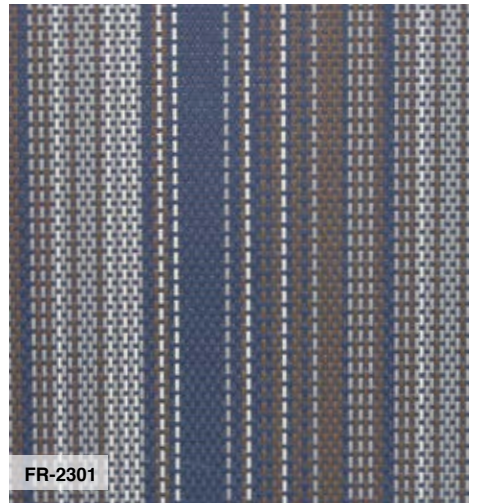
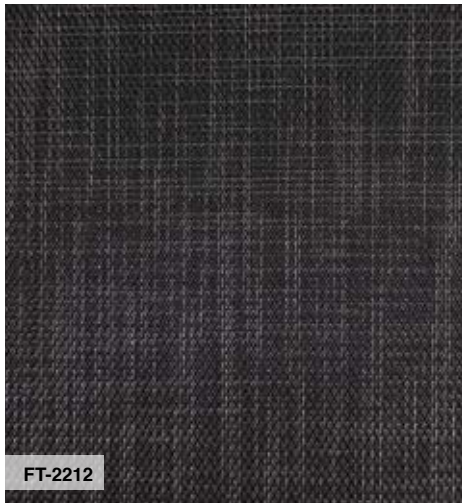
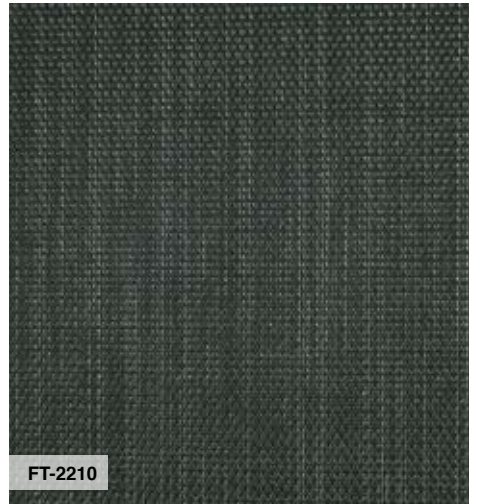
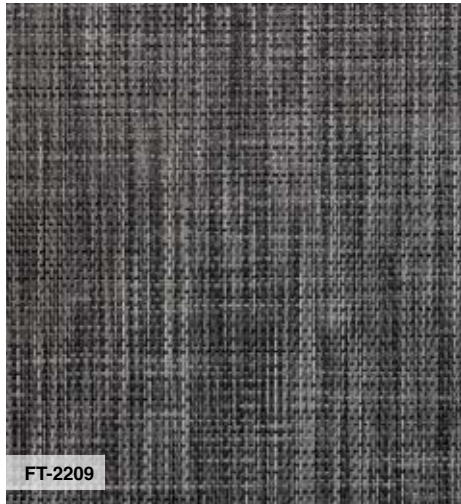
LOOM<sup>+</sup>

WOVEN DESIGN FLOORING



**Your flat environments will become more  
stylish with unlimited design options of LOOM<sup>+</sup>**





8  
mm

12  
mm

PICTURED - LIMED OAK



---

# THE FINEST

AND MOST REALISTIC OAK  
LAMINATE FLOORING

---

Evolution  
BY PROLINE FLOORS

LAMINATE

12  
mm



XL  
EXTRA  
LONG

12mm SMOKED OAK



## GRAND PROVINCIAL OAK LAMINATE FLOORING CREATES ATMOSPHERE IN A HOME FROM THE FLOOR UP.

Grand Provincial Oak laminate flooring is a bold collection which radiates a new level of refinement in laminate flooring. This new range of laminate flooring features 14 modern colours that will fit any decor. Our laminate flooring can exude rustic warmth through the characteristic wood knots and limed, washed finishes or sleek modernism

through the silky surface textures and the accentuated grooves. The gentle tones and ever changing play of light and shade ensure your floor is an envied feature of your home. The laminate flooring boards are a generous 196mm width, replicating European styled Oak plank. Installation is a breeze with the Välinge patented 2G glueless locking system.

LAMINATE



8mm WHITE SAWN OAK

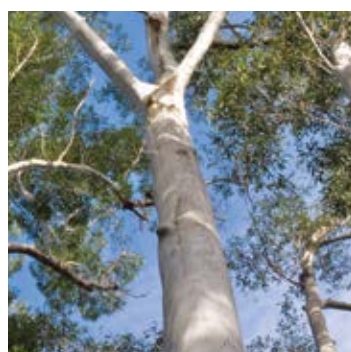
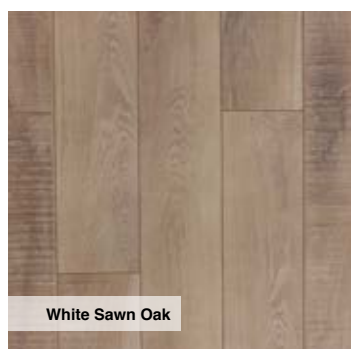
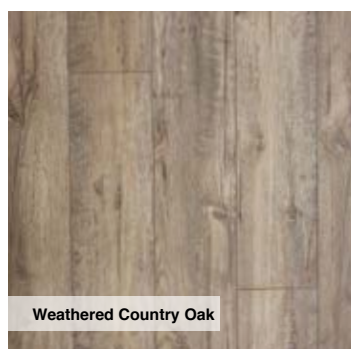
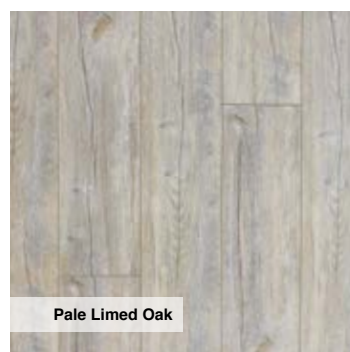
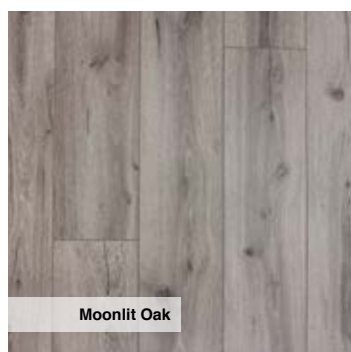
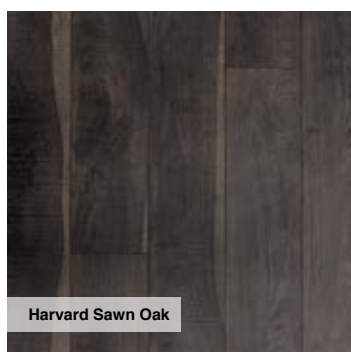
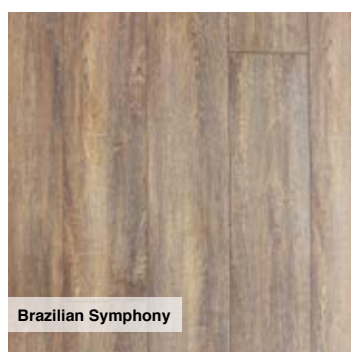
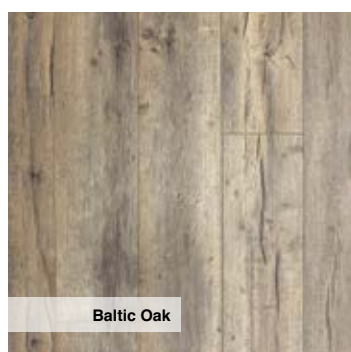
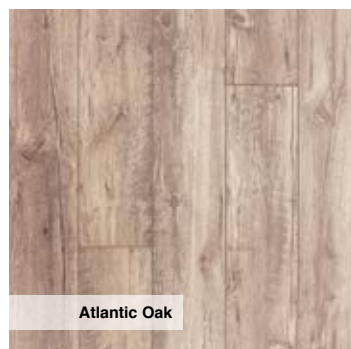
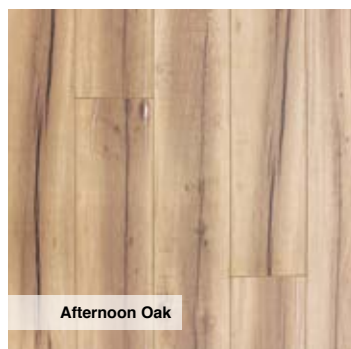


Välinge



WATER RESISTANT  
WAX TREATMENT EDGES

THE GRAND PROVINCIAL OAK SERIES OF ARCHITECTURAL TIMBER LAMINATE FLOORING, IS WIDELY CONSIDERED IN THE INDUSTRY TO BE THE FINEST, MOST REALISTIC LAMINATE FLOOR IN THE WORLD.



LAMINATE

12  
mm

12mm CHAMPAGNE OAK

### LONGEST PLANK - 2200mm

Grand Provincial Oak features Australia's longest laminate plank. Measuring 2200mm in length and 196mm in width, our floors recreate authentic European wide planked Oak. Installation is a breeze with the patented Valinge 2G glueless click system. These floors can be installed in less than a day and are ready to walk on immediately.



12  
mm

# GRAND PROVINCIAL OAK

## 12mm LONGBOARD LAMINATE

NEW COLOUR

Bordeaux Oak

Champagne Oak

NEW COLOUR

Chateau Oak

NEW COLOUR

Danish Oak

Grey Limed Oak

Limed Wash Oak

Nordic Oak

NEW COLOUR

Saint Tropez Oak

NEW COLOUR

Scandinavian Oak

Smoked Oak

Stone Washed Oak

NEW COLOUR

Strasbourg Oak

NEW COLOUR

Toulouse Oak

White Wash Oak

NOW WITH  
**7 NEW COLOURS**  
TO CHOOSE FROM

25  
YEAR

RESIDENTIAL  
WARRANTY

3  
YEAR

COMMERCIAL  
WARRANTY

12  
mm

THICKNESS

AC3

ABRASION  
CLASS  
RATING



HIGH  
DEFINITION  
WOOD  
DESIGN



WEAR  
RESISTANT



V GROOVE  
BEVELLED  
EDGE



FADE  
RESISTANT



VÄLINGE  
CLICK  
SYSTEM



STAIN  
RESISTANT

LAMINATE

8  
mm

12  
mm

Evolution

AUSTRALIAN  
SELECT

LAMINATE

A close-up photograph of a wooden floor made of NSW Spotted Gum. The planks are arranged in a staggered pattern and have a glossy finish that reflects light. The wood grain is prominent, showing various shades of brown and tan. In the top left corner, a white baseboard and the leg of a wooden chair are partially visible.

**12**  
mm

12mm NSW SPOTTED GUM - GLOSS

A close-up photograph of a wooden floor made of QLD Spotted Gum. The planks are arranged in a staggered pattern and have a glossy finish. The wood grain is more pronounced and darker than in the NSW sample, with deep brown and black tones. White baseboards are visible along the walls on both sides of the floor.

**12**  
mm

12mm QLD SPOTTED GUM - GLOSS

# LAMINATE

8  
mm

8mm 2-STRIP BLACKBUTT - MATT

AquaShield is the worlds first dedicated hyper water resistant sealer for laminate flooring. Your Evolution floor now comes factory finished with AquaShield on all 4 sides of every plank providing exceptional protection from water damage and accidental spills.

*Only available on 12mm Gloss and 8mm 1-strip.*



## WATERPROOF TECHNOLOGY

Overlay Paper

Decor Paper

HDF Substrate

Balancing Layer



8  
mm

8mm 1-STRIP BLACKBUTT - MATT

### **Evolution 8mm 1 - 2 Strip Laminate Flooring**

**Thickness:** 8mm

**Design:** Hi Definition 1-2 strip decor

**Edging:** Square Flat finish

**Core board:** HDF

**Core density:** 930 kg per m<sup>3</sup>

**Surface:** Embossed

**Composition:** Melamine

**Finish:** Matt

**Wear rating:** AC3 Heavy residential  
/Light Commercial

**Joining System:** Click

**Board per box:** 8

**1-Strip Size:** 1214 x 142 mm

**2-Strip Size:** 1214 x 192 mm

### **Evolution 12mm 1 - Strip Laminate Flooring**

**Thickness:** 12mm

**Design:** Hi Definition 1 strip decor

**Edging:** Square Flat finish

**Core board:** HDF

**Core density:** 930 kg per m<sup>3</sup>

**Surface:** Flat (Not embossed)

**Composition:** Melamine

**Finish:** Gloss

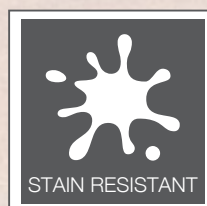
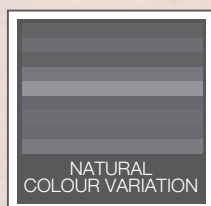
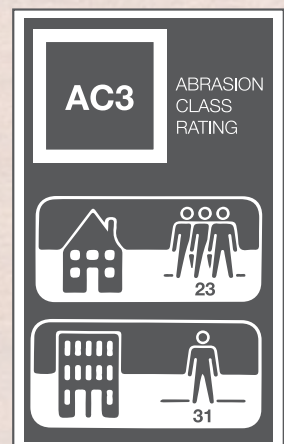
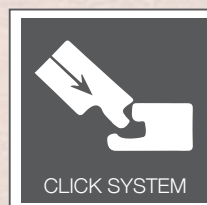
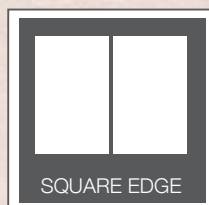
**Wear rating:** AC3 Heavy residential  
/Light Commercial

**Joining System:** Click

**Board per box:** 8

**1-Strip Size:** 1215 x 137 mm

AquaShield is the worlds first dedicated hyper water resistant sealer for laminate flooring. Your Evolution floor now comes factory finished with AquaShield on all 4 sides of every plank providing exceptional protection from water damage and accidental spills. Only available on 12mm Gloss and 8mm 1-strip.



12mm BRUSHBOX

LAMINATE

8  
mm

QSG-LAM-8-SU  
QLD SPOTTED  
GUM 1-STRIP  
1214 x142mm

8mm 1-STRIP QLD SPOTTED GUM - MATT

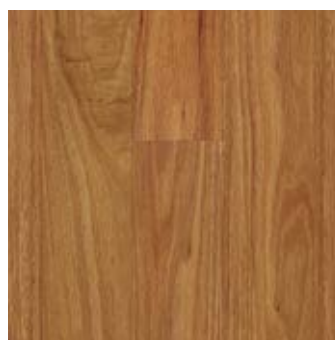
## EVOLUTION 8MM 1-STRIP AUSTRALIAN SELECT LAMINATE



BB-LAM-8-SU  
BLACKBUTT 1-STRIP  
1214 x142mm



DSG-LAM-8-SU  
DARK SPOTTED  
GUM 1-STRIP  
1214 x142mm

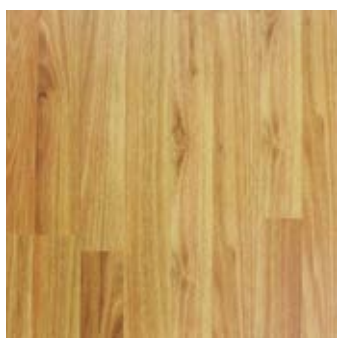


NBB-LAM-8-SU  
NEW ENGLAND  
BLACKBUTT 1-STRIP  
1214 x142mm

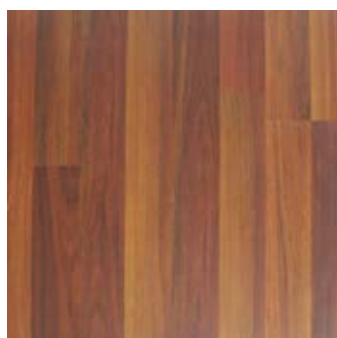


NSG-LAM-8-SU  
NSW SPOTTED  
GUM 1-STRIP  
1214 x142mm

## EVOLUTION 8MM 2-STRIP AUSTRALIAN SELECT LAMINATE



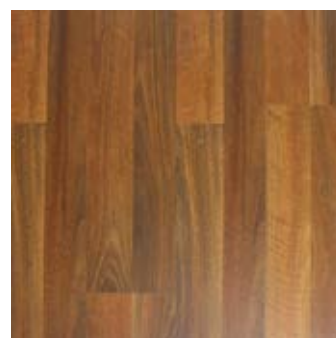
8077  
BLACKBUTT 2-STRIP  
1214 x192mm



8079-1  
BRUSHBOX 2-STRIP  
1214 x192mm



8076-1  
NSW SPOTTED  
GUM 2-STRIP  
1214 x192mm



8076  
QLD SPOTTED  
GUM 2-STRIP  
1214 x192mm

ARCHITECTURAL LAMINATE FLOORING

12  
mm

12mm DARK SPOTTED GUM - GLOSS

## EVOLUTION 12MM AUSTRALIAN SELECT GLOSS LAMINATE



8052-2  
BLACKBUTT  
1215 x137mm



1012  
BRUSHBOX  
1215 x137mm



8022-3  
DARK SPOTTED GUM  
1215 x137mm



8052-10  
NEW ENGLAND  
BLACKBUTT  
1215 x137mm

## EVOLUTION 12MM AUSTRALIAN SELECT GLOSS LAMINATE



8078  
RED MAHOGANY  
1215 x137mm



8022-5  
NSW SPOTTED GUM  
1215 x137mm



8022-2  
QLD SPOTTED GUM  
1215 x137mm



### THE LOOK AND FEEL OF REAL AUSTRALIAN HARDWOODS

Inspired by the great outdoors with a rich blend of brown tones, Evolution Laminate flooring is as true to nature as the NSW hardwood that has fast become Australia's most popular wood flooring species.



BAMBOO

14  
mm

GENESIS

BY PROLINE FLOORS

*Luxe*

NEXT GENERATION BAMBOO FLOORING

LONGER • WIDER • HARDER • PREMIUM FINISH & COLOUR

14  
mm



WESTERN CEDAR

# NEXT GENERATION BAMBOO FLOORING

Genesis LUXE represents the next generation of bamboo flooring. We have incorporated many new flooring techniques and technologies into the LUXE system to create a floor that is exceedingly beautiful.



25 YEAR RESIDENTIAL  
WEAR WARRANTY



10 YEAR COMMERCIAL  
WEAR WARRANTY



LIFETIME STRUCTURAL  
WARRANTY

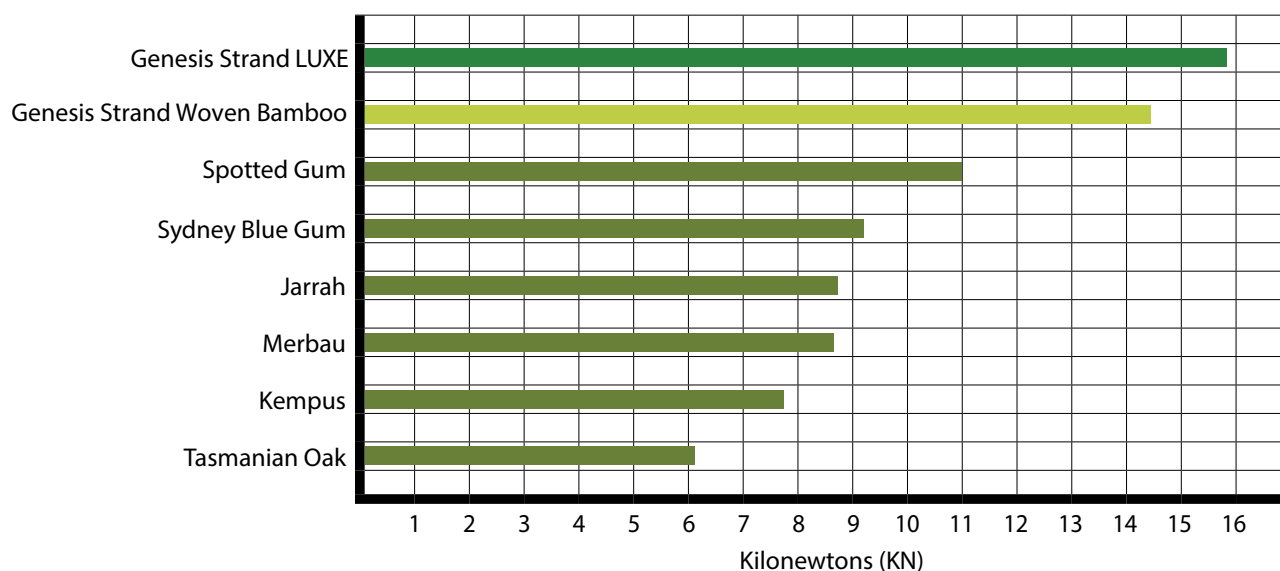


SUPER E0  
EMISSION CLASS

**BAMBOO**

**14**  
mm

## JANKA RATING IN KILONEWTONS



**UNIFIT**®  
PATENTED TECHNOLOGY

Installing Genesis Strand Woven Flooring is simple using the world's best patented click system. The click system ensures a quick installation time, enabling you to enjoy your new floor within hours.



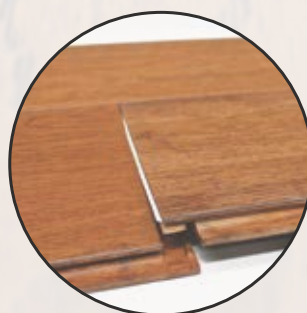
**STEP 1**



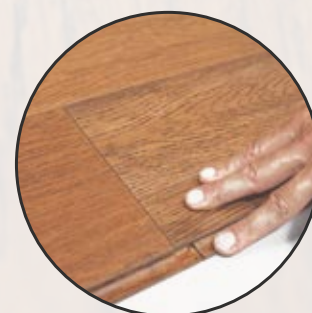
**STEP 2**



**STEP 3**



**STEP 4**



**BAMBOO**

**14**  
mm

PORTAFINO

**XL**  
EXTRA  
WIDE

14  
mm

HAVANNA



#### WESTERN CEDAR

SURFACE: Embossed & matt-lacquered  
DIMENSIONS: 2200mm x 216mm x 14mm  
WEIGHT PER BOX: 22.5 kg  
BOARDS PER BOX: 3  
AREA PER BOX: 1.426 m<sup>2</sup>



#### SEMILLON

SURFACE: Embossed & matt-lacquered  
DIMENSIONS: 2200mm x 216mm x 14mm  
WEIGHT PER BOX: 22.5 kg  
BOARDS PER BOX: 3  
AREA PER BOX: 1.426 m<sup>2</sup>



#### MOSCATO

SURFACE: Embossed & matt-lacquered  
DIMENSIONS: 2200mm x 216mm x 14mm  
WEIGHT PER BOX: 22.5 kg  
BOARDS PER BOX: 3  
AREA PER BOX: 1.426 m<sup>2</sup>



#### PORTAFINO

SURFACE: Embossed & matt-lacquered  
DIMENSIONS: 2200mm x 216mm x 14mm  
WEIGHT PER BOX: 22.5 kg  
BOARDS PER BOX: 3  
AREA PER BOX: 1.426 m<sup>2</sup>



#### TOBACCO

SURFACE: Embossed & matt-lacquered  
DIMENSIONS: 2200mm x 216mm x 14mm  
WEIGHT PER BOX: 22.5 kg  
BOARDS PER BOX: 3  
AREA PER BOX: 1.426 m<sup>2</sup>



#### AMARETTO

SURFACE: Embossed & matt-lacquered  
DIMENSIONS: 2200mm x 216mm x 14mm  
WEIGHT PER BOX: 22.5 kg  
BOARDS PER BOX: 3  
AREA PER BOX: 1.426 m<sup>2</sup>



#### HAVANNA

SURFACE: Embossed & matt-lacquered  
DIMENSIONS: 2200mm x 216mm x 14mm  
WEIGHT PER BOX: 22.5 kg  
BOARDS PER BOX: 3  
AREA PER BOX: 1.426 m<sup>2</sup>



#### MILAN

SURFACE: Embossed & matt-lacquered  
DIMENSIONS: 2200mm x 216mm x 14mm  
WEIGHT PER BOX: 22.5 kg  
BOARDS PER BOX: 3  
AREA PER BOX: 1.426 m<sup>2</sup>

**BAMBOO**

**14**  
mm

# GENESIS

BY PROLINE FLOORS

Worlds Hardest Strand Woven Bamboo Flooring

A NEW WAY FORWARD IN  
SUSTAINABLE FLOORING

14  
mm



FRENCH BLEED

# GENESIS

BY PROUNE FLOORS

World's Hardest Strand Woven Bamboo Flooring



25 YEAR RESIDENTIAL  
WEAR WARRANTY



10 YEAR COMMERCIAL  
WEAR WARRANTY



LIFETIME STRUCTURAL  
WARRANTY



SUPER E0  
EMISSION CLASS



## Super E0

World's Lowest FOC Emissions

## Sustainability

Genesis Bamboo is certified green and produced from rapidly renewable Moso Bamboo which grows to maturity in 5-6 years. A hardwood forest, in comparison can take over 50 years to renew itself.

### How much formaldehyde does Genesis Strand Woven Bamboo emit?

All bamboo products are laminated and the industry standard for this laminating process mandates the use of urea-formaldehyde adhesives. All urea-formaldehyde adhesives emit formaldehyde. However, Genesis's proprietary manufacturing adhesives emit just 0.02 ppm (parts per million) or less. This is significantly less than allowable by all world standards, including Australian Standard E0, U.S. OSHA, German E0, Californian CARB Phase 1 and Phase 2, and the world's most stringent Japanese JIS/JAS (F 4 star) emissions standard of 0.03ppm. Formaldehyde is present in the air that we breathe at natural background levels of about 0.03 ppm so the emission from Genesis Strand Bamboo of 0.02ppm is effectively a zero emission limit.

14  
mm

BALINESE TEAK

**BAMBOO**

**14**  
mm



CARBONISED

**14**  
mm



WHITE WASHED BRUSHED

**BAMBOO**

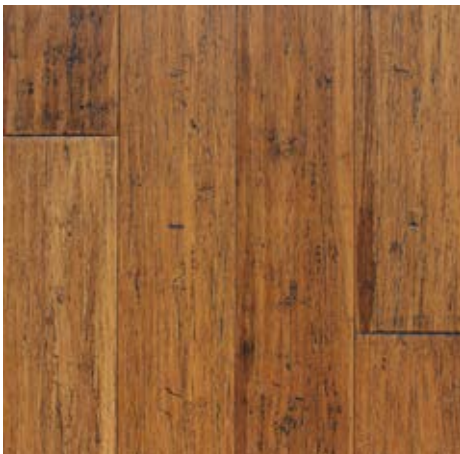
**GENESIS**

BY PROLINE FLOORS

Worlds Hardest Strand Woven Bamboo Flooring

**14**  
mm

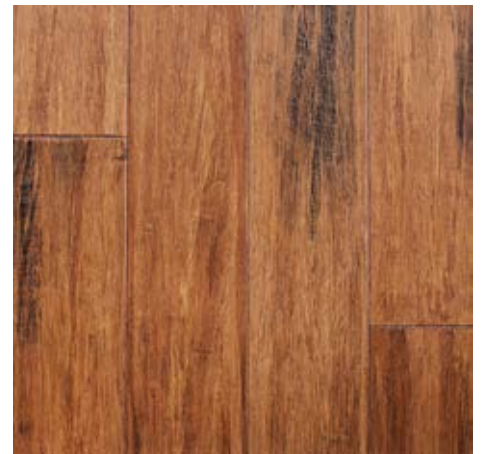
SANDY BEECH STAIRS



BALINESE TEAK



BRUSHED ONYX



CALIFORNIA



CARBONISED



EQUINOX



FRENCH BLEED



JAVA



KOSCIUSKO ASH



MOCHACCINO



NATURAL



SANDY BEECH



SANTA MONICA



SAVANNA



SEPIA



WHITE WASHED BRUSHED

VINYL

SELF ADHESIVE PLANK

4  
mm

# NanoTAC

## U L T R A L A Y

A REVOLUTION IN  
VINYL FLOORING



4  
mm

KHAKI OAK

VINYL

SELF ADHESIVE PLANK

4  
mm



BLACKBUTT

## What is NanoTAC

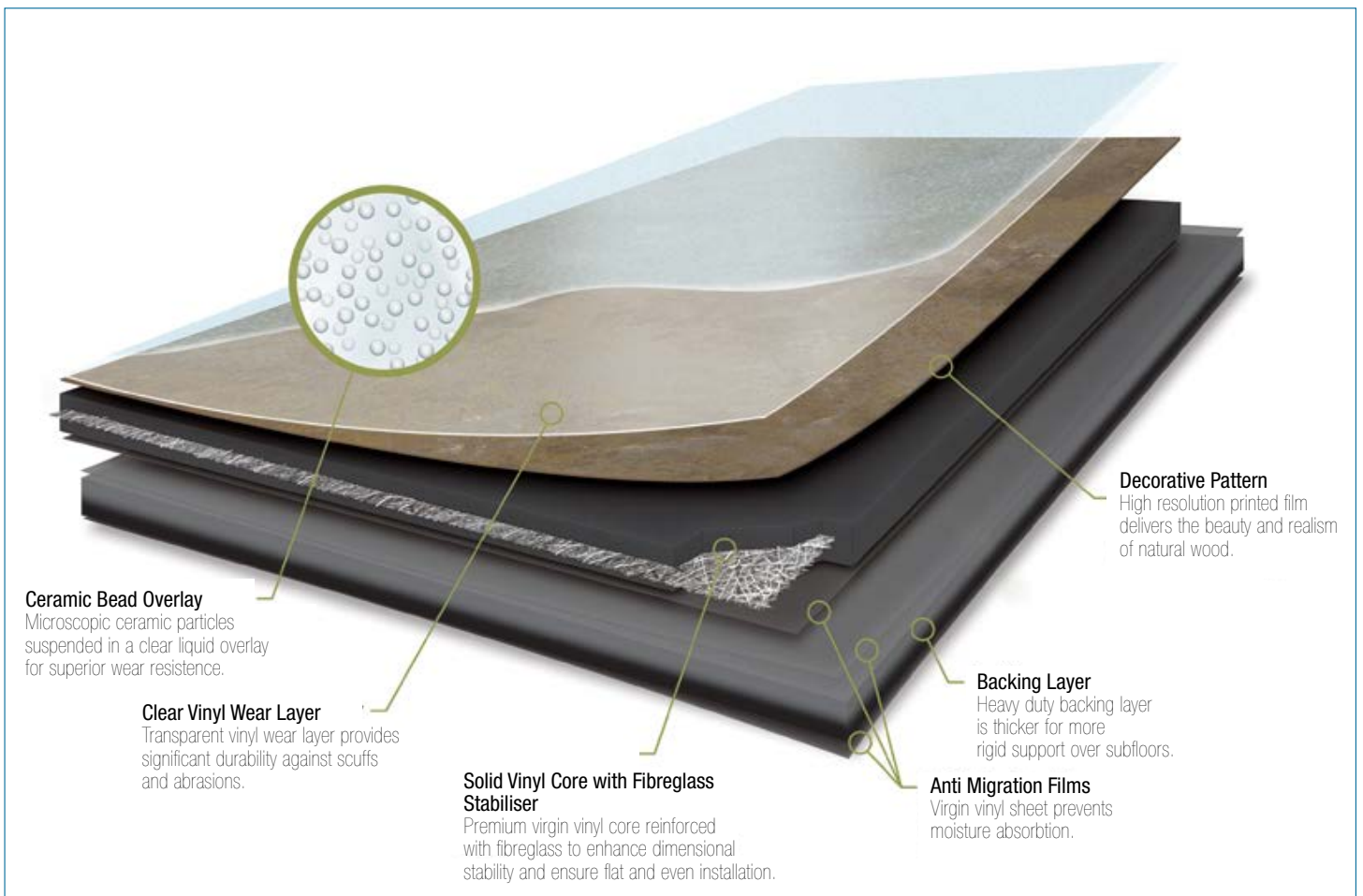
FusionLVT NanoTAC is an entirely new concept for the installation of vinyl floors without adhesives. The FUSIONLVT NanoTAC system resists any lateral movement without the use of glue. This is achieved by using a patented Nano structure that adds superior grip properties to the Vinyl plank. NanoTAC is formulated to be non-setting and capable of making a solid but non-permanent bond with the subfloor.

This technique is very different to the common 'Looselay' systems that rely on non adhesive tread pattern to stay in place which, in a lot of installations does not work and then requires the use of vinyl glue to prevent movement.

Although the FUSIONLVT NanoTAC system will resist any lateral movement, the floor can be taken up and re-installed with ease. Our looselay plank is the ideal solution for DIY or professional installations in which quick and simple installation is needed.

Choosing NanoTAC is a healthy choice. By eliminating the need for glue there is no release of solvents or humidity associated with liquid glues.

## Layers of Technology



**VINYL**

SELF ADHESIVE PLANK

**NanoTAC**  
ULTRALAY

**4**  
mm

TUSCAN OAK



ARCTIC OAK



BLACKBUTT



BRUSHBOX



GUNSTOCK OAK



IVORY OAK



JARRAH



KHAKI OAK



PEARL GREY OAK



SILKY OAK



SPOTTED GUM



TUSCAN OAK



WESTERN OAK

# NanoTAC

ULTRALAY

## ULTIMATE DIY

# DIY-Garage Floors

## Create Your Own Masterpiece

Why should your garage miss out on style? On the cutting edge of technology, NanoTAC is Australia's most realistic vinyl timber looking flooring. It's quiet, comfortable, durable and waterproof.

It also happens to be quick and easy to install by anyone - simply place into position and engage the patented NanoTAC grip technology. If you need to cut a plank, simply score and snap with a Stanley knife to ensure a flawless finish. In a matter of hours, your garage will be completely re-imagined.

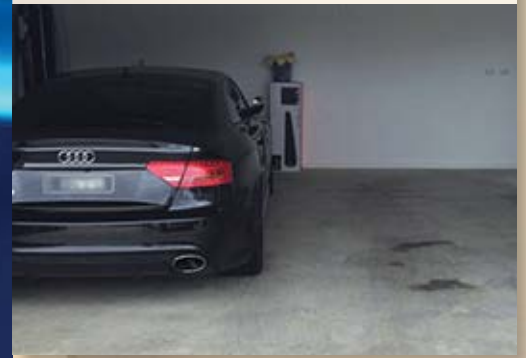
Made a mistake? Simply lift it up and replace.

Unlike looselay vinyl, NanoTAC will not slide. The patented grip technology allows individual planks to resist over 100 kilograms of lateral force, guaranteeing no movement. NanoTAC planks are easily repositioned, are reusable, and leave no glue residue once removed. Individual planks can be replaced anytime with ease, without having to dismantle the entire floor. It's quality, commercial grade flooring that you can actually install yourself. Renovating just doesn't get any easier.

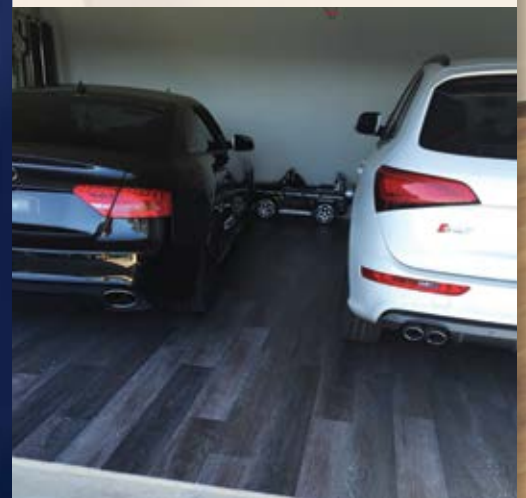
NanoTAC is available in 12 architectural colours, from Australian hardwoods to European oaks. The design potential is endless. Impressive patterns like herringbone or diagonal lay are easily achievable to the DIY novice.

Adding value to your home has never been easier.

**BEFORE**



**AFTER**



**LUXURY DIY FLOORS**



**INTRICATE PATTERNS**



NanoTAC  
Technology



Recyclable



Reusable



Durable



Quiet



Comfortable



Waterproof



ECO Friendly

# COMMERCIAL GRADE FLOORING

**NO EXPERIENCE REQUIRED**



**EASY & QUICK INSTALLATION**



**PATENTED**  
GLUELESS SYSTEM

SCAN TO WATCH **You Tube** VIDEO



For your nearest stockist phone **(02) 9525 5241** or visit **prolinefloors.com.au**

VINYL

GLUE DOWN PLANK

3  
mm

**FUSIONLVT**

BY PROLINE FLOORS

MOST REALISTIC VINYL  
PLANK IN THE MARKET



3  
mm

SPOTTED GUM

# Vinyl Plank Flooring

## VINYL

GLUE DOWN PLANK

3  
mm

The natural tones of Australian timbers such as Blackbutt and Spotted Gum are highly sought after in the home-renovation market. The rich hues and organic grain of these materials offer a classic and timeless finish.

For more information visit  
[www.fusionlvt.com.au](http://www.fusionlvt.com.au)

BLACKBUTT

### FUSIONLVT 3mm Glue Down Vinyl Planks

Traditional glue down vinyl plank. Suitable only for professional vinyl installers. Suitable for commercial or domestic applications.

#### SPECIFICATIONS

Thickness: 3mm  
Wear layer: 0.55mm Commercial grade  
Slip Resistance: R10  
Length: 1219.2 mm  
Width: 152.4mm  
Area per Box: 3.34m<sup>2</sup>  
Planks per box: 18  
Installation method: professional glue down  
Glues required. FusionLVT Acrylic or FusionLVT two part polyurethane glue.

1219.2 mm

152.4 mm



SPOTTED GUM

"Most realistic Vinyl Plank in the market"

The Ultimate Collection of  
Australian Hardwoods  
Now available in Vinyl Plank.



# HERMITAGE PRESTIGE OAKS ACCESSORIES



**STAIR NOSING**  
Code: OAK-VCSN-15  
( 2100 x 87 x 24 ) mm



**T MOULDING**  
Code: OAK-TM-15  
( 2100 x 50 x 18 ) mm

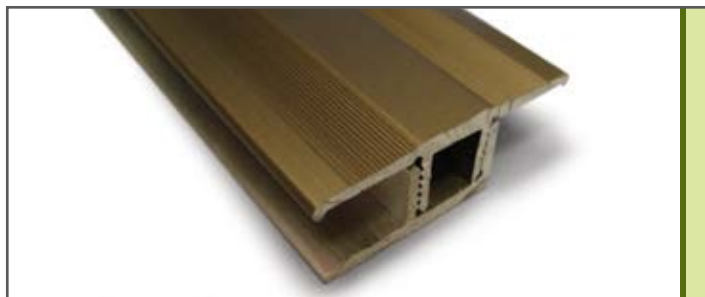


**SCOTIA**  
Code: OAK-SC-15  
( 2100 x 20 x 20 ) mm

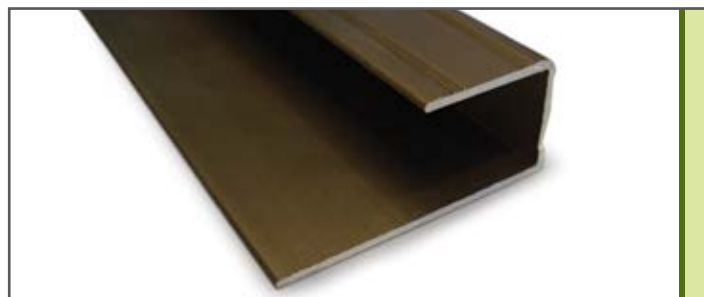


**END CAPS**  
Code: OAK-EC-15  
( 2100 x 40 x 20 ) mm

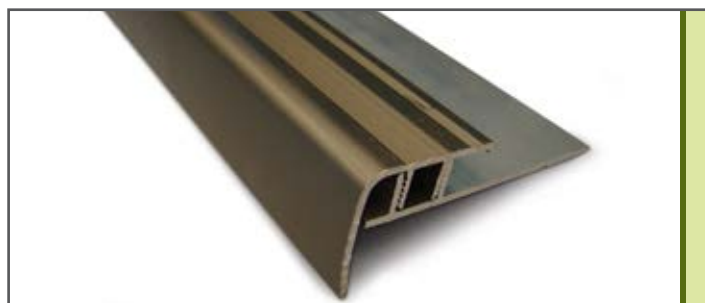
# GENESIS METAL ACCESSORIES



**EXPANSION TRIM**



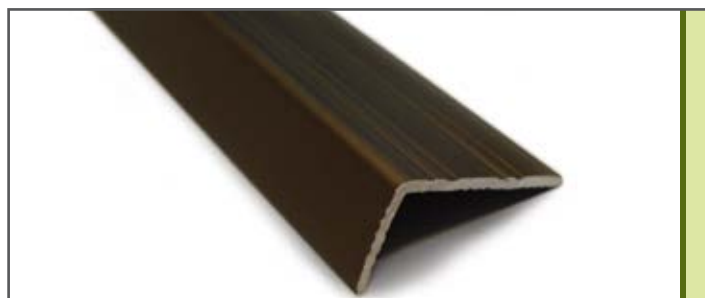
**SENIOR END**



**STAIR NOSING**



**TRANSITION RAMP**



**ANGLE**



**WALL END**

# EVOLUTION ACCESSORIES

\*\* = colour code



**END CAP**  
Code: \*\* -LEC-08  
(2400 x 33 x 11) mm



**REDUCER**  
Code: \*\* -LRD-08  
(2400 x 48 x 12) mm



**T-MOULDING**  
Code: \*\* -LTM-08  
(2400 x 42 x 11) mm



**STAIR NOSING**  
Code: \*\* -LSN-08  
(2400 x 54 x 17) mm



**SCOTIA**  
Code: \*\* -LSC-08  
(2400 x 27 x 12) mm



12MM GRAND PROVINCIAL OAK GREY LIMED STAIRS

# GRAND PROVINCIAL OAK ACCESSORIES



## T MOULDINGS

Code: LTM-12 (2440 x 45 x 11) mm

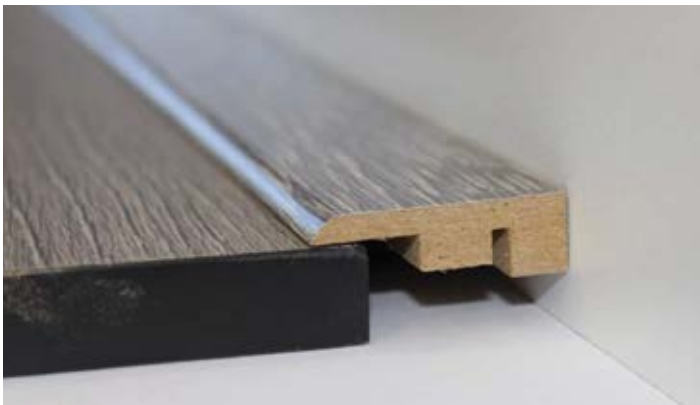
T Mould is used to compartmentalise an installation into separate zones that expand and contract independently from each other. Made from the same hard melamine surface and are all colour matched to your floor.



## REDUCERS

Code: LRD-12 (2440 x 46 x 14) mm

The transition ramp is used to safely provide an anti trip transition from flooring height to subfloor level. Made from the same hard melamine surface and is colour matched to your floor.



## END CAPS

Code: LEC-12 (2440 x 39 x 12) mm

The end trim is used to fill the expansion gap left around the perimeter of an installation in front doorways, sliding doors, built in wardrobes and island benches. Made from the same hard melamine surface and is colour matched to your floor.



## SCOTIA

Code: LSC-12 (2440 x 20 x 20) mm

Scotia covers up the expansion gap on the perimeter of an installation. Used when removing the existing skirting boards is difficult or when no skirting board exist. Made from the same hard melamine surface and is colour matched to your floor.



## STAIR NOSINGS

Code: LVCSN-12 (2440 x 51 x 18) mm

Click stair nosing's provide a seamless transition from tread to riser whilst incorporating a perfectly formed bull nose profile. Made from the same hard melamine surface and are all colour matched to your floor.



## CARPET REDUCER

Code: LCRD-12 (2440 x 35 x 14) mm

The Carpet Reducer is used to finish off the joint where your floating floor meets carpet. Made from the same hard melamine surface and is colour matched to your floor.

# BAMBOO ACCESSORIES



## END CAP

Code: OEC-14  
( 1850 x 40 x 20 ) mm



## EXPANSION TRIM

Code: TM-14  
( 1850 x 50 x 15 ) mm



## CLICK STAIR NOSING

Code: VCSN-14  
( 1850 x 88 x 25 ) mm



## SCOTIA

Code: SC-14  
( 1850 x 20 x 20 ) mm



## TRANSITION RAMP

Code: TR-14  
( 1850 x 58 x 20 ) mm

# **NEW** PROLAY

## ACOUSTIC UNDERLAY

that will make your floor 30% QUIETER to walk on



**PRO·LAY**



**PRO·LAY**

**PRO·LAY**



**PRO·LAY**



**PRO·LAY**



**PRO·LAY**

**PRO·LAY**



**PRO·LAY**



30 m<sup>2</sup> per roll  
\$5 m<sup>2</sup> + GST

"We use and recommend Prolay to provide improved impact isolation and greatly reduced reflected foot noise in many applications, from high rise developments to single dwelling projects".

## 2MM PROLAY ACCOUSTIC UNDERLAY



with Overlapping Moisture Barrier  
(suitable for strata apartments)

## 2MM PROLAY UNDERLAY



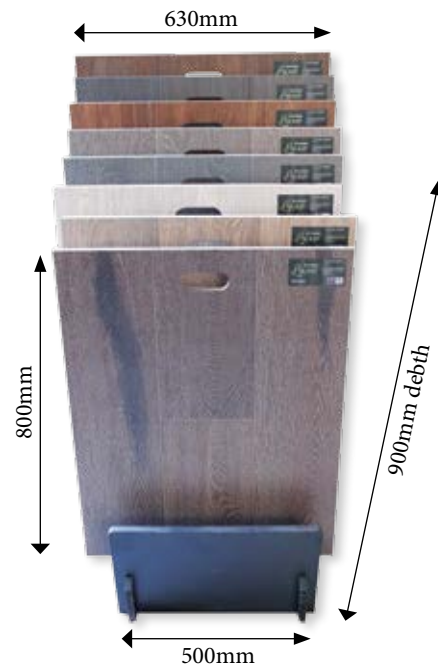
with Overlapping Moisture Barrier

# ORDER YOUR NEW **DISPLAY STANDS** NOW!



### LARGE STAND

Holds 14 sample boards  
600 mm (w) x 400 mm (H)



### SMALL STAND

Holds 12 sample boards  
630 mm (w) x 800 mm (H)

## SAMPLE BOARDS

600mm wide



## SWATCHES

Hand swatches come  
according to range,  
with individual pieces  
200 mm (w) x 300 mm (H)





12mm GREY LIMED OAK  
WITH MATCHING STAIRS



Proudly imported and distributed by Proline Floors.

For your nearest stockist Phone: (02) 9525 5241

Fax: (02) 9525 5245

Email: [sales@prolinefloors.com.au](mailto:sales@prolinefloors.com.au)

Website: [www.prolinefloors.com.au](http://www.prolinefloors.com.au)